



8' x 7' 5251 almond with optional arched madison inserts and barcelona 1 exterior hardware.

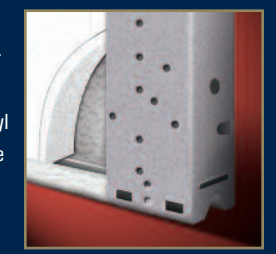
MODEL 5250	Short Stamp, Uninsulated
MODEL 5251	Short Stamp, Insulated
MODEL 5950	Long Stamp, Uninsulated
MODEL 5951	Long Stamp, Insulated

25-GAUGE ALL-STEEL PAN TYPE CARRIAGE HOUSE COLLECTION

While maintaining the elegant appearance of our premier models, these all-steel Carriage House doors perfectly combine the beauty and charm of a traditional wood carriage house door with the durability and value of a pan-style door. The 5250/5950 models are deeply embossed with a wood grain finish, available in a variety of colors, and have several window options to choose from. Decorative handles and hinges are standard, and can be upgraded to wrought iron for a truly old-world look that will complement your home perfectly.

5251/5951 DOOR CONSTRUCTION

These models utilize 25-gauge exterior steel skin with 1-3/8" thick CFC¹⁰ free polystyrene foam insulation with a vinyl back cover. Steel end and intermediate stiles are held firmly in place by a tab-loc system, creating increased strength and rigidity.



FEATURES

CHARMING. PRACTICAL.

Pictured. 16' x 7' 5951 white door with optional 4 pc arched stockton windows and wrought iron hardware

These models are also available in



For additional information, please see numbered footnotes on page 30.